

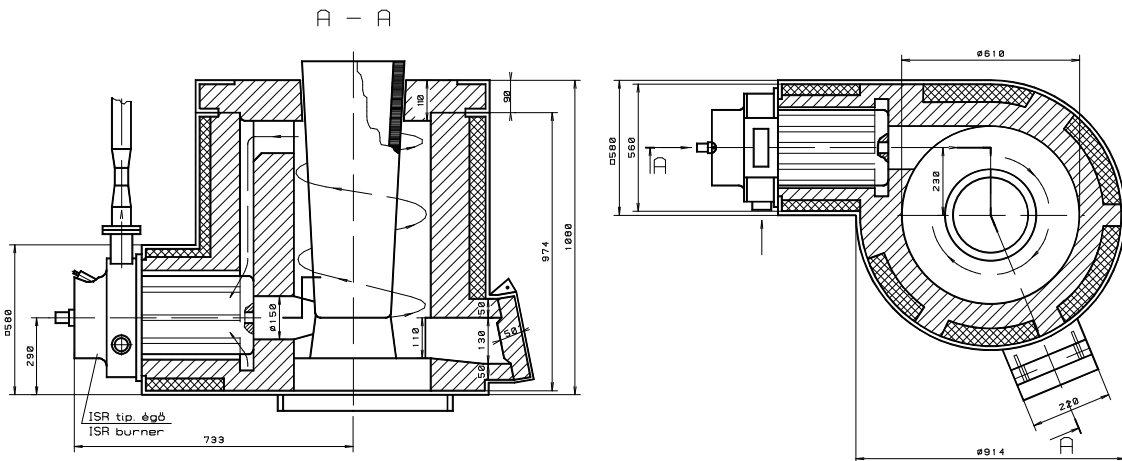


## CRUCIBLE FURNACES

### CRUCIBLE FURNACE WITH RECUPERATIVE HIGH VELOCITY BURNERS

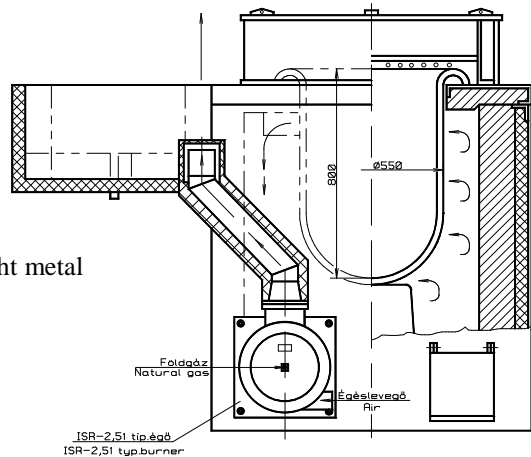
Furnace stock: light metal  
Max. weight of furnace stock: 300 kg  
Size of working chamber:  $\varnothing 610 \times 820$  mm

Nominal heating capacity: 400 kW natural gas  
Max. temperature in the crucible: 1100 °C



### RECUPERATIVE HIGH VELOCITY BURNER FOR CRUCIBLE SALT BATH FURNACE

Furnace stock: Salt bath for heat treating light metal  
Max. weight of furnace stock: 60 kg  
Size of working chamber:  $\varnothing 800 \times 1095$  mm  
Nominal heating capacity: 150 kW natural gas  
Service temperature of salt bath: 580 °C



## TÜKI Research and Development Company for Combustion Technology

3515 Miskolc-Egyetemváros Pf. 3  
Phone: (36/46) 555-070, Fax: (36/46) 555-078

